

Daily Weather Update

Coastal Area Around The Sri Lanka

Information Fusion Center-Colombo



Information Fusion Center
Colombo
Sri Lanka

Date 2026.01.11



WEATHER FORECAST FOR SEA AREAS AROUND THE ISLAND DURING NEXT 24 HOURS

Issued at 05.30 a.m. on 11 January 2026



**DEPARTMENT OF METEOROLOGY
SRI LANKA**

CONDITION OF THE RAIN

Showers may occur at several places in the sea areas off the coast extending from Mannar to Batticaloa via Kankasanthurai and Trincomalee. Showers or thundershowers may occur at a few places in the other sea areas around the island

WINDS

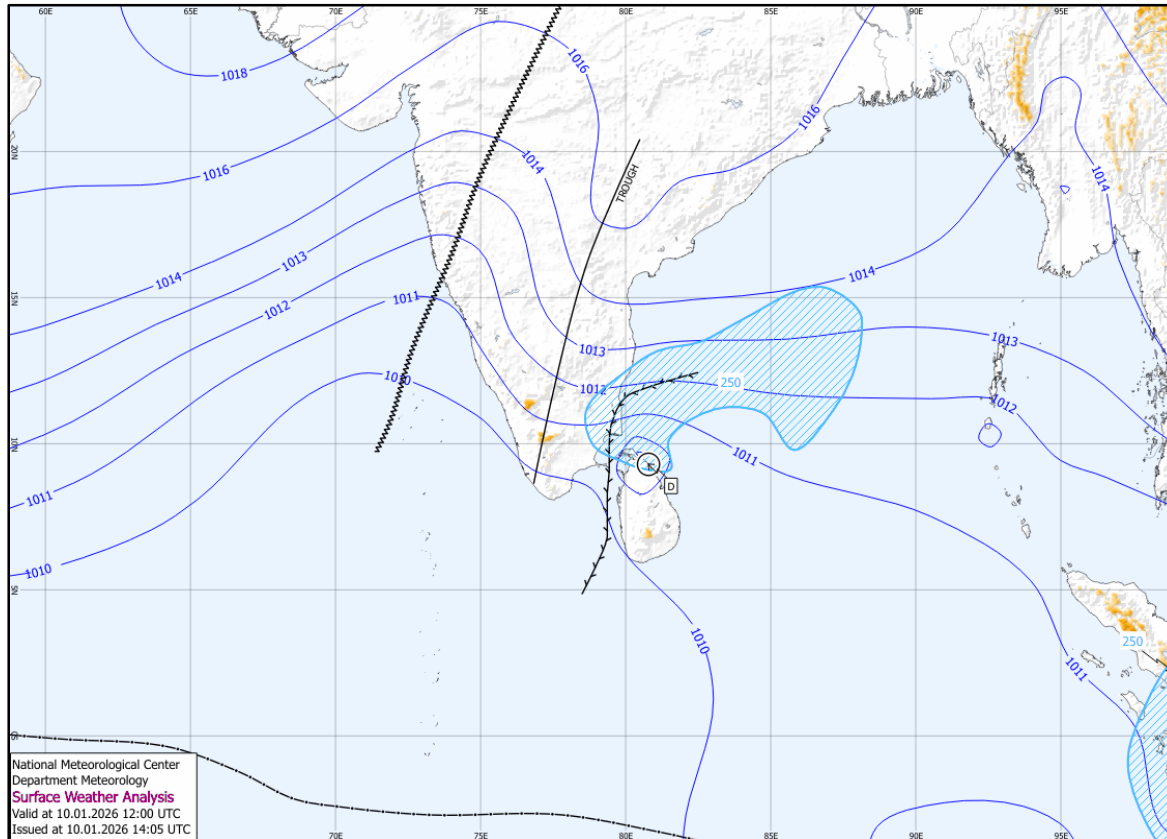
Winds will be Easterly to north-easterly and wind speed will be (30-40) kmph. Wind speed can increase up to (50-55) kmph at times in the sea areas off the coast extending from Puttalam to Kankasanthurai via Mannar

STATE OF SEA

The sea areas off the coast extending from Puttalam to Kankasanthurai via Mannar will be rough at times. The other sea areas around the island will be moderate.

Temporarily strong gusty winds and very rough seas can be expected during thundershowers.

SURFACE ANALYSIS CHART



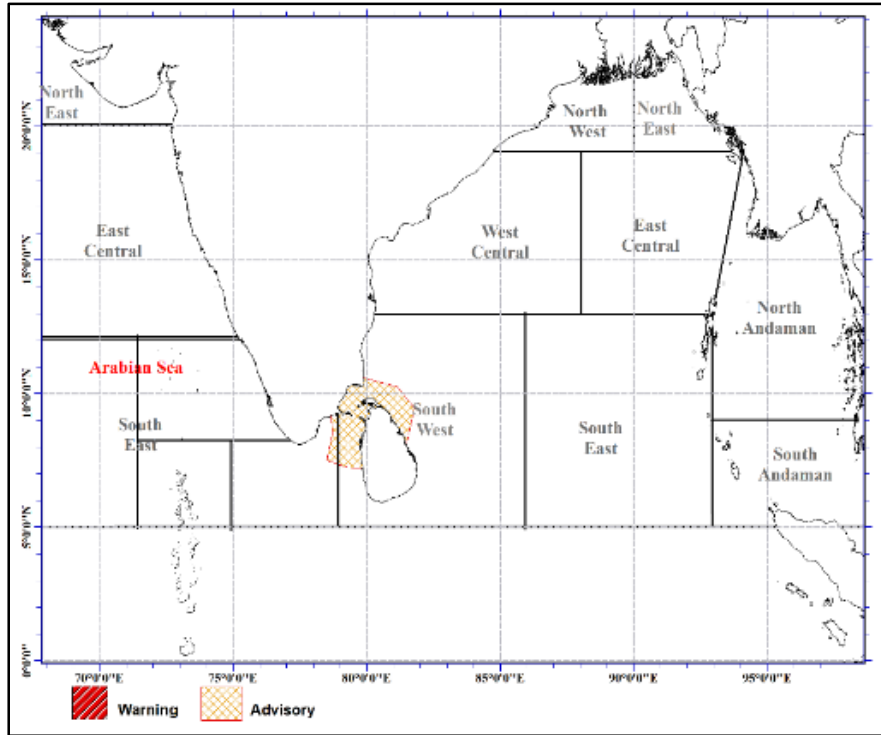
This analysis charts show the surface pressure pattern over Sri Lanka and the surrounding area. They display isobars (lines of equal pressure) and indicate areas of high (H) and low pressure (L) along with their central pressure value. Isobars are represented by solid blue lines, spaced every 1 hPa. High pressure is usually associated with mainly dry, settled weather with light winds, while low pressure is normally associated with unsettled weather, which is often wet and windy. The lower the pressure, generally the stronger the winds and the heavier the rain.

The map shows Coordinated Universal Time (UTC) and the local time is UTC+5.30. .

11-Jan-26

IFC -Colombo

SEVERE ADVERSARY

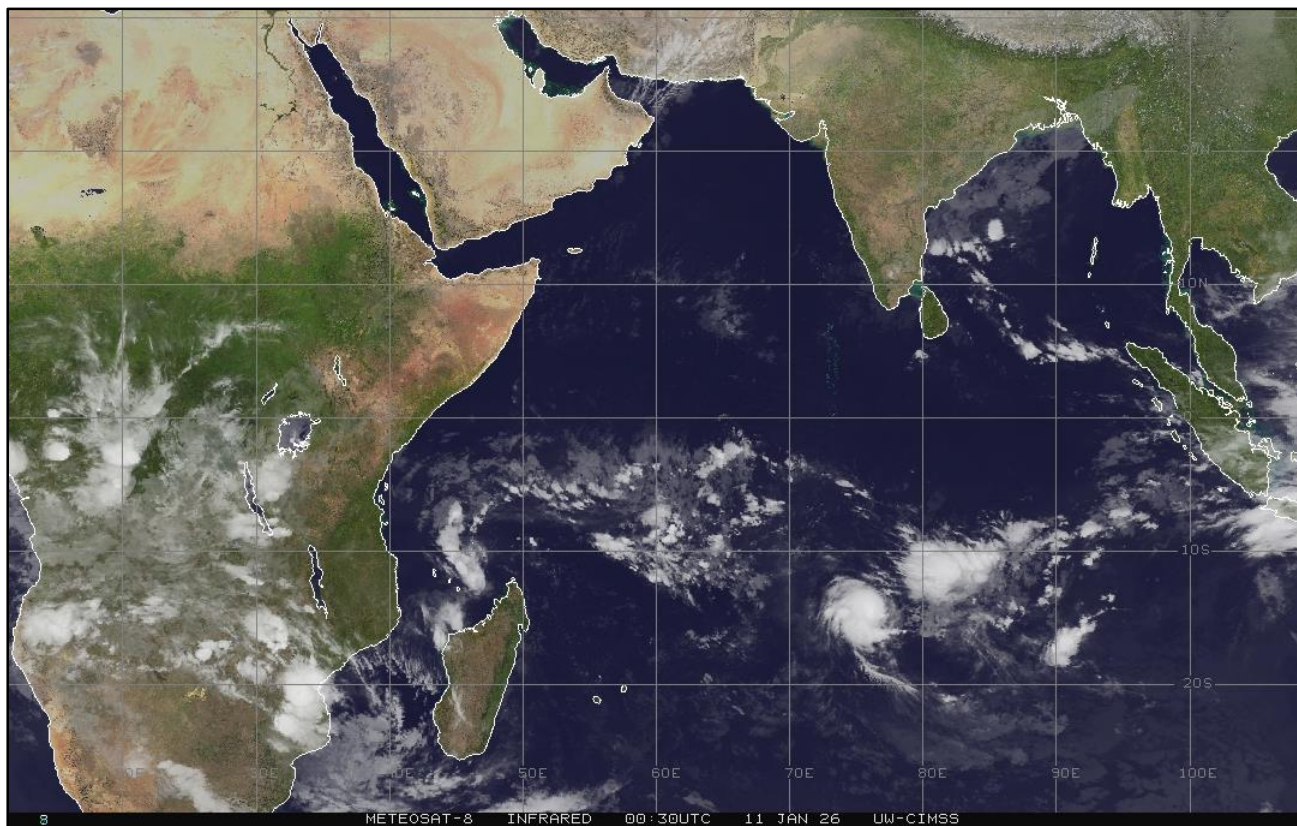


Winds will be Easterly to north-easterly and wind speed will be (30-40) kmph. Wind speed can increase up to (50-55) kmph at times in the sea areas off the coast extending from Puttalam to Kankasanthurai via Mannar.

Advisory for depression over Southeast Bay of Bengal.

Issued at 05.30 a.m. on 11 January 2026 for the period until 11.30 a.m. 11 January 2026.

SATELLITE IMAGE



11-Jan-26

IFC -Colombo



**Information Fusion Center
Colombo
Sri Lanka**

THANK YOU

The Officer Incharge
Information Fusion Centre - Colombo
Naval Headquarters, Colombo, Sri Lanka
+94 11 719 480 6
+94 74 120 4829
ifc@navy.lk
ifc.cbo@gmail.com